

# FOUNDATION LEARNING COMMUNITY

## AREA NEWSLETTER - TERM 1, 2022

### Meet the Foundation Teachers



Stephanie



Feona



Alex



Samantha

**HELLO!**

### MATHS

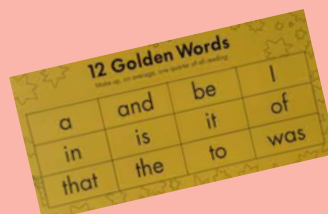
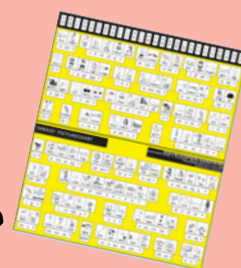


During Term 1 Foundation students will be working towards:

- Recognise and name the numbers from 0 to 5
- One to one matching
- Subitising to 5
- Order 0 to 5
- Count collections 0 to 5
- Writing numerals 0 – 5 with some reversal
- Name days of the week in sequence
- Use some position vocabulary
- Answer yes/no questions about themselves

### READING

Practise identifying all letters of the alphabet and the most common sounds on the THRASS chart.



Practise the Golden Words.

### WRITING

During Term One Foundation students will be working towards:

- Recognising and writing their full name.
- Learning to write a recount about what they did in Investigations.
- Learning how to form all upper and lower case letters correctly.



### INVESTIGATIONS

*I am a Citizen!*  
**Civics and  
Citizenship**

Our big question  
for Term One is:

*"What makes me  
special?"*



# ADMINISTRATION AND REMINDERS



## HEALTHY EATING

We follow a healthy eating policy at our school where students are only able to have one treat, such as a small packet of chips or biscuits.

Lollies and drinks other than water are not allowed.

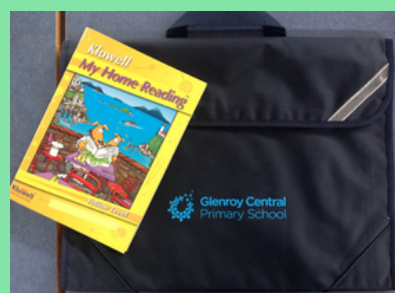


We are a nut free school. Sandwich spreads including Nutella and Peanut Butter are banned.

## TAKE HOME DIARIES

Please read with your child every night and sign their take home reading diary.

Students must bring their book bags to school EVERY DAY!



## UNIFORM

- Please make sure you are familiar with the Dress Code Policy.

- Full school uniform is compulsory.

- Black shoes are to be worn with the full school uniform.

- School hats must be worn from September to April.

- Sports uniforms are worn on Thursdays only.

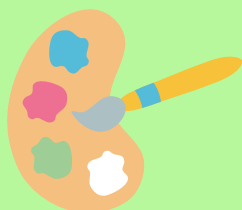
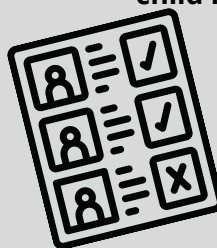
- Runners are to be worn with sports uniforms.



## ATTENDANCE

Students are expected to be at school every day unless they are unwell.

Please make sure that you notify the front office or a teacher from your child's Learning Community through phone or XUNO if your child is absent from school.



**Glenroy Central**  
Primary School

