

# 1/2 LEARNING COMMUNITY

## Term 2 Newsletter



Welcome to Term 2! We hope you had a relaxing holiday and that everyone is ready to continue building on their skills.

We have lots of exciting things planned for this term, including an excursion to The Werribee Open Range Zoo! Please read below to see more information about what the students will be learning this term, as well as the important dates for Term 2. Please contact the teachers through Xuno with any questions.

Kind regards, Leanne, Oliver, Sev, Chloe and Jai

### Reading

During Term 2, the 1/2 students will continue their reading skills in the following areas by:

- participating in a daily phonics program
- decoding words using letter-sound knowledge
- recognising High Frequency Words
- applying a variety of reading strategies
- answering a range of comprehension questions.



### Maths

During Term 2, the 1/2 students will continue to develop their mathematical skills in the following areas:

- Place Value
- Counting
- Addition and Subtraction
- Problem Solving
- Shape
- Mass

123

### Investigations

This Term, our big question is 'Hoo hoo who lives in the animal kingdom?' The students will learn about:

- grouping animals according to their features
- the basic needs of animals
- how animal features help them to thrive



### Writing

During Term 2, the 1/2 students will continue to develop their writing skills in the following areas:

- Writing Information Reports
- Using sound charts to make the correct spelling choices
- Punctuation
- Handwriting using correct formation
- Editing their work
- Publishing their work on dotted thirds paper and on laptops.



# ADMINISTRATION AND REMINDERS

## Attendance

Students are expected to be at school everyday unless they are sick. Please notify the front office or a teacher from your child's Learning Community through phone or XUNO if your child is absent from school.

**Every day counts!**

## Take Home Diary & Library

Please **read** with your child **every night** and sign their reading diary. Students must bring their book bags to school every day.

Please make sure your child brings their **library bag** to school **every Tuesday** so that they can borrow a book of their choice every week.

## Reading Eggs and Mathletics

Your child's Reading Eggs and Mathletics login is in their diaries. Please encourage your child to log in to Reading Eggs and Mathletics to practise essential maths and reading skills.

## Healthy Eating

As per our Whole School Healthy Eating policy, students are only able to have **one treat**, such as a small packet of chips or biscuits in their lunchbox. Lollies, chocolate and drinks other than water are not allowed. We are a **nut free school**. Sandwich spreads like Nutella and Peanut Butter are banned.



## Spelling

Students will do their spelling tests **every second Thursday** on odd weeks. This is how they move onto the next colour of the **M100W words**. Please practise their spelling words at home with them every night.

## Uniform

Full school uniform is compulsory as per the Dress Code Policy. **Winter school uniform must be worn from Week 3.**

- Fully black shoes are to be worn with the school uniform
- School hats must be worn from September to April
- Sport uniforms and runners are worn on Wednesdays only
- All hair accessories must be navy, blue or white
- Stud earrings and sleepers worn in the ears are the only acceptable jewellery.



### Monday



### Tuesday



Library

### Wednesday



### Thursday



Even weeks: Spelling Test

### Friday



Assembly 3pm

## Important Dates

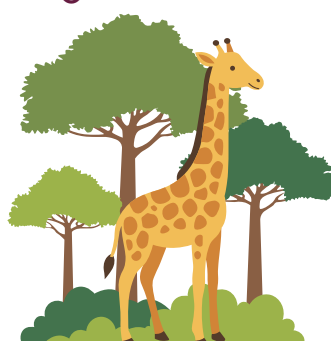
### April

- Friday 24th April: ANZAC Day Assembly 9:10am



### May

- Thursday 7th of May: The Werribee Open Range Zoo



### June

- Monday 8th June: King's Birthday Public Holiday
- Thursday 25<sup>th</sup> June: Parent Teacher Interviews 12pm-7:30pm (student free day)

