

Year 1/2 Learning Community



MATHEMATICS



This term the Year 1/2s are focusing on Counting, Place Value, Addition, Subtraction, Problem Solving and Measurement and Geometry.

READING

During this term, the Year 1/2s will be focusing on building their reading skills by using reading strategies and answering comprehension questions.

WRITING



During this term, the Year 1/2s will be focusing on writing Information Reports. Students will also be developing their editing and publishing skills.

INVESTIGATIONS



This term the Year 1/2 students will be focusing on the topic 'I am a Biologist!' Students will be digging deeper into the topic by thinking about the the big question 'Why are animals intriguing?' Students will be working in collaborative groups to build their team working skills.



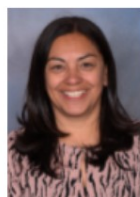
1/2 LEARNING COMMUNITY TEACHERS



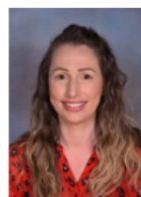
Samantha



Oliver



Sev



Crystal



Kelly



Jasmine



REMINDERS!

UNIFORM



Please ensure your child is wearing the correct Winter uniform. Students are required to wear only black shoes with their full school uniform.

During Term 2, students are not required to wear their hats outside.

On **Wednesdays** the Year 1/2 students have specialists and are required to wear their sport uniform.



TAKE HOME READING

Please make sure that students read **one** book each night from their take home reading bag.

When reading with your child it is important to ask them questions about the book such as **'Who are the characters?'** **'What happened at the end of the story?'**

Diaries must be signed by the parent or carer each night.

HEALTHY LUNCH EATING



Please make sure your child has a healthy lunch each day, which includes only one treat. Students are not allowed to bring chocolates or lollies to school.

STRICTLY NO NUTS OR NUT PRODUCTS.

Students need to bring their water bottles filled with water.

